



**RIVER EDGE**
BEHAVIORAL HEALTH
We Make Life Better.™

**RIVER EDGE
BEHAVIORAL
HEALTH
ANNUAL REPORT
FY 2024**



**NO WRONG
DOOR**



A LETTER FROM THE CHAIRMAN

Dear River Edge Team and Community Stakeholders,

For more than 50 years, River Edge has opened its doors to some of our communities' most vulnerable individuals from ages 5 to 95. Access is truly the key to meeting the needs of our communities and is reflected in the new headquarters and service buildings, as well as transportation services as needed.

River Edge's array of evidence-based services and supports is truly inspiring, as are those individuals benefiting from them. Our approach focuses on long-term health, hope, and healing. From the most intensive crises requiring hospitalization, through medication management, peer support groups, case management, and services for individuals with intellectual and developmental disabilities, we are here.

This annual report shines a light on River Edge's commitment to make life better for countless individuals, their families, and their loved ones. You will read about transformed lives. You will be inspired by stories of hope, health, and healing.

I am grateful for the guidance of the Board of Directors, the wisdom of River Edge's leadership, and the dedication of every team member. I am thankful to the greater Middle Georgia community and its elected officials, the Georgia Department of Behavioral Health and Developmental Disabilities, and law enforcement and school system partnerships. And finally, thank you to all of our families and friends, especially of those we serve, for their part in saving lives, reconciling families, and creating communities in peer support, as well as in group homes.

I look forward to the privilege of serving for years to come as we work together to help others enjoy fulfilled, meaningful lives.

Steven E. Corkery, PhD, NCSP
Chairman, River Edge Behavioral Health Board of Directors

BOARD OF DIRECTORS

Steven E. Corkery, PhD, NCSP
Chairman
Member-At-Large

Monica A. Swayne, LCSW
Vice Chair
(Macon-Bibb County)

Alex C. Smith, JD
Secretary
(Jones County)

Priscilla G. Doster, EdD
(Monroe County)

Commissioner Lonnie Ford
(Twiggs County)

Erin P. Keller, MEd
(Macon-Bibb County)

Charles E. Richardson
(Macon-Bibb County)

Wade H. Williamson, CPA
(Macon-Bibb County)



A LETTER FROM THE CEO

Dear River Edge Team, Partners, and Supporters,

Welcome to River Edge Behavioral Health's Fiscal Year 2024 Annual Report. I am honored to share with you our success stories and achievements from the last fiscal year – July 1, 2023, through June 30, 2024.

Last year, we launched a new strategic plan to guide River Edge on the next phase of our journey. We have begun to fulfill our commitments, investing in our strategic priorities with innovative ideas and infrastructure as we lay the foundation for an even more responsive and resilient behavioral healthcare system for the 21st century.

Enhancing quality of care has embodied our vision and expresses our daily commitment that there is “No Wrong Door” to services. In part, this means stabilizing and improving access to services for individuals and families throughout the community. This past year, we expanded our programs by launching a jail in-reach program, developing a new Crisis Services and Diagnostic Center to serve individuals with Intellectual and Developmental Disabilities (the first of its kind in the state of Georgia), created new supportive housing units, and established new community partnerships. All these efforts aim to improve access to healthcare for the individuals and families we are privileged to serve.

Working as a team has been a key to our success. Our dedicated clinical and support staff have always been the foundation of our success as a great organization, and we are on a path to strengthening this foundation for the future. Last year, we took great strides in promoting a culture of wellness at River Edge by rolling out new tools and resources to grow our teams. We are focused more than ever on the recruitment and retention of staff, and we are collaborating to find new ways to support the hardworking people in this organization.

As you will see in this report, we have also worked hard to shift our culture to become far more representative of our community. We have increased our understanding of what this means as we have engaged members of diverse communities beyond traditional healthcare providers. River Edge's commitment to continuing to improve the quality of care we offer through innovative initiatives and expanding infrastructure for the future has been a priority. The design and construction of our new Behavioral Health Outpatient Clinic, Corporate Headquarters, and Adult Peer Support and Community Integration Center provide exciting new possibilities for the communities we serve and will ensure continued access to evidence-based behavioral health services.

Although this report highlights only a small fraction of the tremendous accomplishments we have achieved throughout the year, I hope it will serve as a reflection of our entire team and the services provided to individuals and families. Our mission remains “*We Make Life Better*” for our communities. This report is a tribute to that pursuit.

A handwritten signature in blue ink that reads "Cass Hatcher". The signature is fluid and cursive, with a prominent initial 'C'.

Cass Hatcher, CCM, EDFP
Chief Executive Officer



OUR MISSION, VISION, AND VALUES

In alignment with our mission, vision, and values, River Edge provides comprehensive access to expert mental health and substance use care so people can enjoy healthy and fulfilling lives.

Individuals at every level of care at all River Edge locations benefit from a multi-disciplinary and compassionate care team(s) who provide personalized guidance and support. Our teams of licensed clinicians and support team members are experts in their fields who bring a wide array of knowledge and diversity to the individuals they serve.

OUR MISSION:

We deliver services and support that promote recovery, resilience, and inclusion with dedication and pride.

OUR VISION:

To be a national leader of behavioral health services and developmental disability supports.

OUR VALUES:

We updated our Core Values this year. At River Edge Behavioral Health, “We Make Life Better” by following these Core Values:

A Heart for Recovery

- Person-Centered and Individual-Driven
 - Delivering the highest quality
- Holistic Health
 - Treating individuals as a whole person
- Understand where the real value lies for individuals served and our business.
 - Values everyone and treats people with dignity and professionalism

Passion in All We Do

- We are more than a company – we are part of the community.
 - We achieve more when we all collaborate and work together.
- Express excitement for serving others.
 - Interactions are personable and memorable.
- Check in with each other.
 - Be an exceptional teammate.

Embrace Change

- Respond meaningfully to new growth opportunities.
 - Set realistic expectations.
- Look beyond the present to deliver future value.
 - Encourage team members to share their ideas, thoughts, and solutions.
- Develop and incorporate new technologies.
 - Build a workspace that thrives on mutual respect and shared responsibilities using modern technological tools.

FY24 HIGHLIGHTS

As a beacon of hope and healing in Middle Georgia, River Edge has consistently demonstrated an unwavering commitment to excellence, compassion, and innovation in the field of behavioral health.

River Edge Behavioral Health embodies the essence of exceptional care through its comprehensive array of services aimed at addressing the diverse needs of individuals struggling with mental health challenges. From outpatient counseling and therapy to residential treatment programs and crisis intervention services, River Edge offers a continuum of care that is both holistic and individualized, ensuring that each person receives the support and resources necessary for their journey to recovery.



River Edge Team Members and CCBHC Certification Team

One of the most remarkable aspects of River Edge's approach to behavioral health is its unwavering dedication to accessibility and inclusivity. Regardless of one's background, socioeconomic status, or level of need, River Edge ensures that everyone has access to high-quality mental healthcare. Through its commitment to reducing barriers to treatment, River Edge has become a lifeline for many individuals who may have otherwise fallen through the cracks of the system.

Moreover, River Edge is a trailblazer in implementing innovative practices and programs that push the boundaries of traditional mental healthcare such as the one-of-a-kind in the State of Georgia Intellectual Developmental and Disability Crisis and Diagnostic Center. Whether it be through the integration of telehealth services to reach underserved populations, the implementation of evidence-based practices to improve treatment outcomes, or the development of community-based initiatives to promote mental wellness, River Edge consistently strives to stay at the forefront of the field.

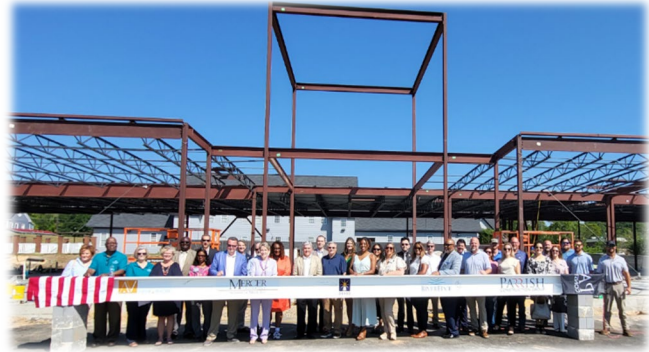
Among the many outstanding accomplishments of River Edge in the past year are:

- Achieved CCBHC (Certified Community Behavioral Health Clinic) Certification, first CSB in Georgia to complete
- First CSB in the state to achieve NADD Accreditation
- Achieved excellent reviews from the Georgia Department of Behavioral Health and Developmental Disabilities Dartmouth Assertive Community Treatment Scale (DACTS)
- Three River Edge team members were awarded the Champions of Hope Award
- ANCOR (American Network of Community Options and Resources), Georgia Direct Support Professional of the Year in Intellectual and Developmental Disabilities (IDD)
- Distributed and trained team members on the use of 25 Sensory Neurodivergent Kits across multiple departments



Georgia DSP of the Year Jessica Edwards and Community Service Board Members

- Topping Off of the innovative and state-of-the-art IDD Crisis Services and Diagnostic Center
- Construction underway for a Headquarters and Outpatient Center
- Purchased property and demolished blighted structures for the Adult Peer Support and Community Integration Center
- Completed Tiny Cottages of Macon, ten tiny homes to house individuals with mental health or addiction recovery disabilities
- Commenced building Serenity Courtyard of Macon, twenty-six tiny homes to house seniors with mental health or substance use disorder disabilities
- Partnered with Partners for Home to provide 140 affordable housing units to unhoused individuals in Fulton County
- Hosted the Mobilize Recovery Across Georgia Bus Tour in Macon-Bibb County
- Installed four OAK boxes (Overdose AID Kit) sponsored by the Clinton Foundation throughout Macon-Bibb County



Partner Organizations at IDD CSDC Topping Off Ceremony



Overdose Aid Kit (O.A.K.) Box Outside River Edge Emery Highway Location

- Partnership with Bibb County Sheriff's Office for integrated mental health services in jail, serving over 450 inmates each month
- Contract review passed with 100% compliance by MAT (Medication Assisted Treatment)
- Excellent Fidelity Review achieved by ACT (Assertive Community Treatment) Team
- Excellent Fidelity Review achieved by Mental Health Court
- Advocacy efforts for the rights of individuals with IDD expanded by the See Me, Hear Me Advocacy Group by providing information at school resource fairs and its new Facebook page

Beyond its clinical expertise, River Edge is a pillar of strength and support for change to the communities we serve. Our team of dedicated professionals embodies our values of compassion, empathy, and resilience, creating a nurturing and empowering environment where individuals feel heard, valued, and supported on their journey toward healing and recovery.

CERTIFIED COMMUNITY BEHAVIORAL HEALTH CLINIC (CCBHC)

River Edge successfully achieved the significant milestone of completing the Certified Community Behavioral Health Clinic (CCBHC) certification criteria review in November 2023. This progress indicated that River Edge is committed to operating as an accessible, integrated behavioral health clinic while tracking and monitoring quality outcomes. During the review, our organization completed the following activities:

- Desk review of policies, procedures, and related documents supported the organization's implementation of the CCBHC criteria and met more than 90% of certification standards

- Interviews with direct care and management staff indicated an adoption of the CCBHC model
- Interviews with individuals served assured meaningful participation in treatment
- Review of records identified team member training, competencies, and quality improvement processes
- Review of records demonstrated care coordination

Specific strengths were identified during the review that included:

- Team members being flexible and able to meet the needs of individuals served
- Care Coordinators added to the Intake/Assessment Department, as well as to clinic locations to support linking individuals to resources
- Obtained National Association for the Dually Diagnosed (NADD) accreditation and one team member is a NADD surveyor
- Operating a convenient in-house pharmacy serving multiple counties
- Onboarding for new team members occurring bimonthly, with the first five days of training on the unit
- Directors and managers meeting with team members individually to assess needs, supports, and training segments

River Edge is working to establish a PPS (Prospective Payment System) rate by internal and external parties.

NATIONAL ASSOCIATION FOR THE DUALY DIAGNOSED (NADD)

NADD is an association for persons with intellectual/developmental disabilities and mental health needs, comprised of individuals, families, and support professionals dedicated to enhancing the understanding and treatment of people experiencing co-occurring intellectual/developmental diagnoses (IDD) and mental health conditions. River Edge was the first Community Service Board in Georgia to be accredited in 5 programs when it received a 3-year accreditation in January 2023. River Edge team members are working towards individual certification.

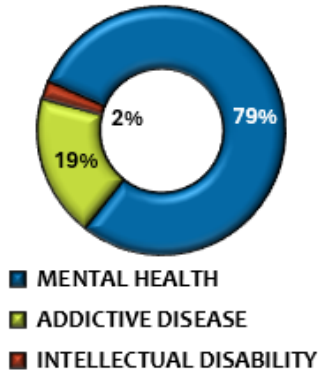
- 2 team members received certification as a NADD-DSP
- 1 team member received certification as a NADD-DDS

PROGRAM REPORTS

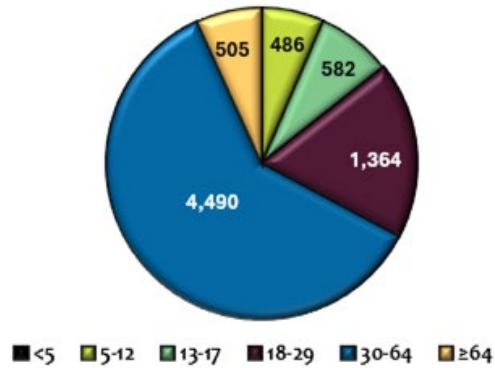
BEHAVIORAL HEALTH SERVICES:

7,427 Individuals Served FY24

SERVED BY DIAGNOSTIC CATEGORY



SERVED BY AGE



Diagnostic tests are an important part of supporting and maintaining individuals' overall health. The above represents categories and number of individuals served by age group.

ADULT SERVICES: Behavioral Health Assessments (BHA), including admissions, nursing assessments, medication management, and medication administration (injections):

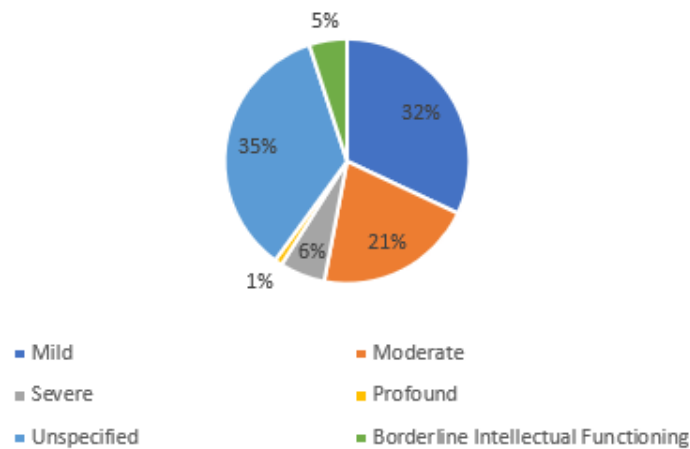
- 1,621 individuals served per month
- The three most frequently occurring diagnoses are psychotic disorders, depressive disorders, and bipolar disorders.

CHILD AND ADOLESCENT SERVICES: BHAs, nursing assessments, medication management, and individual and family therapy.

In FY24 C&A/APEX kickstarted a newsletter to parents and guardians to share information about mental health, resources, upcoming events, and reminders:

- 282 individuals served per month
- 500 individuals served for therapy
- Georgia Apex Program (APEX): Promotes collaboration between River Edge and schools to provide school-based services and supports, including training for school staff, in hopes of facilitating the right care at the right time for children, young adults, and families:
 - 1,438 students served
 - 39 schools in 6 counties

INTELLECTUAL AND DEVELOPMENTAL DISABILITIES:



Acuity for individuals with intellectual disabilities refers to the severity of the individual's situation.

- **Community Residential Alternative (CRA) Licensed Group Homes:** Serve up to 4 individuals with intellectual and developmental disabilities who require intense levels of residential support:
 - 10 group homes
 - 34 individuals served
 - 92% occupancy rate
- **Community Living Support (CLS):** Regularly scheduled services in an individual's natural home that help individuals maintain a healthy and productive life at home and in the community:
 - 12 individuals served at 8 residences
 - 92% occupancy rate
- **Community Integration:** Provides customized day support to individuals across Macon-Bibb, Monroe, Jones, and Twiggs counties to give individuals opportunities to fully participate in community life through meaningful activities:
 - 89 unique individuals served

RIVER EDGE RECOVERY CENTER: Crisis services divert people away from hospitalization and reduce the need for intervention within emergency departments or by law enforcement:

- Individuals in crisis diverted from hospitalization: 1,377
 - 39 adult beds with 1,036 individuals served
 - 16 child & adolescent beds with 341 individuals served

PERMANENT SUPPORTIVE HOUSING SERVICES: Investments in permanent supportive housing have helped decrease the number of chronically homeless individuals:

- Central Georgia area:
 - individuals experiencing homelessness: 448
 - Male: 147
 - Female: 165
 - individuals and/or families in housing: 312

SUPPORTED EMPLOYMENT: Promotes obtaining competitive work in the community, while providing the support necessary to ensure workplace success. The Supported Employment Program has maintained its exemplary fidelity record since FY15. There were 39 new individuals enrolled in the program:

- 187 individuals served
- 82 individuals employed

FULTON COUNTY: As a provider for the Fulton County Behavioral Health Network, River Edge provides comprehensive adult mental health and addiction treatment services to all Fulton County residents regardless of their ability to pay.

- **Court Related Mental Health Services:** In collaboration with Magistrate and State Courts, operates the Misdemeanor Mental Health Court Program (MMHC):
 - DUI – 45 individuals completed the year-long treatment portion of the program
 - MMC – 2 graduates completed their requirements. MMC hosted its 2nd Annual Resource Fair
- **Core Behavioral Health Services:** Provides therapy services for common behavioral issues including depression, anxiety, addiction, and other emotional and behavioral health concerns:
 - Outpatient Services – Added a new Life Skills group service
 - Collaborated with Fulton County DBHDD in the creation of mental health PSA videos for the holidays, along with other behavioral health network partners
 - Held a month-long celebration of Mental Health Awareness Month in May with activities that included a weekly lunch-and-learn series and a Whole Health and Wellness Fair
- **Fulton Permanent Supportive Housing:** River Edge works with Fulton County to execute its strategies to end homelessness in the county:
 - Individuals experiencing homelessness: 2,867
 - Male: 104
 - Non-binary: 1
 - Trans women: 3
 - Women: 48
 - Individuals and /or families in housing: 157 individuals served

PHARMACY SERVICES: River Edge offers value-added products and services to mental health agencies, psychiatric and behavioral health centers, supportive housing, and Assertive Community Treatment (ACT) teams.

- Emery Highway location:
 - 32,203 prescriptions dispensed
 - 2,207 individuals served, including 600 new individuals
- Atlanta location:
 - 3,561 prescriptions dispensed
 - 274 individuals served, including 97 new individuals
- River Edge Recovery Center (inpatient):
 - 13,627 prescriptions dispensed
 - 1,103 individuals served, including 882 new individuals
- Acquisition costs (formerly Patient Assistance Program [PAP]): \$679,793.23

RECRUITMENT, HIRING, AND RETENTION

Over the last year, we have supported our model of care with comprehensive recruiting, hiring, training, and staffing protocols that help our dedicated team members best support the individuals we serve every day.

- 365 new hires registered for fingerprints
- Transitioned most employees from Affordable Business Solutions, Inc. to River Edge

CAPITAL PROJECTS

INTELLECTUAL & DEVELOPMENTAL DISABILITIES (IDD) CRISIS SERVICES AND DIAGNOSTIC CENTER (CSDC): The first of its kind in the state of Georgia, this Georgia Department of Behavioral Health, and Developmental Disabilities (DBHDD) initiative offers a broad range of healthcare services for adult individuals with IDD. The project has reached the following milestones:

- Partnership with Mercer Medicine to run the Diagnostic Center
- Groundbreaking ceremony in coordination with Georgia DBHDD and Mercer Medicine
- Signing of the steel beam and Topping Off Ceremony to celebrate the final structural beam going into place



Architectural rendering of building courtesy of Azar + Walsh Architects

Integrated Medicine will provide quality care in a patient-centered and family-focused environment providing:

- Behavioral health assessments
- Dentistry
- Psychiatry
- Neurology
- Physical therapy
- Occupational therapy
- Speech and language pathology
- Ophthalmology
- Other primary care specialist services

The total development cost is \$20 million. Construction continues with an estimated completion in March of 2025.

NEW CENTRAL HEADQUARTERS AND OUTPATIENT CLINIC: The new River Edge Behavioral Health Center will consist of an outpatient clinical building and our new central headquarters administrative offices. The Outpatient Clinical Building will offer:

- Outpatient Clinic
- Outpatient Admissions
- Care Coordination
- Psychiatric Services
- Adult Behavioral Health Outpatient Services
- Behavioral Health Urgent Care
- Child and Adolescent Services
- Substance Use Disorder Services
- Internal Medicine Services
- On-site Pharmacy Services
- Clinical Case Management
- Core Case Management
- Assertive Community Treatment (ACT)
- Intensive Case Management (ICM)
- Intellectual and Developmental Disabilities (IDD)
- Permanent Supportive Housing (PSH)
- Supported Employment (SE)

The center will be visible from Riverside Drive and is located along a bus line, assuring ease of access to evidence-based behavioral health services in Central Georgia.

Since last fiscal year, the old Riverside Plaza structure has been demolished to make way for construction and environmental assessments have been completed. Constructed in 1967, the plaza was a major retail center serving North Macon and featured the original freestanding Natalia's Restaurant, a public library, and a United States Post Office. Concrete debris and materials have been crushed to utilize as part of the new building site to reduce waste and spending. The demolition of Riverside Plaza and the construction of a new behavioral health center will be a milestone in the redevelopment of Riverside Drive. Construction on the new behavioral health center, currently under design by Azar+Walsh Architects, LLC, is scheduled to start in October of 2024 with an estimated completion in December of 2025.



A backhoe tears down the top of the roof of the old Riverside Plaza

ADULT PEER SUPPORT AND COMMUNITY INTEGRATION CENTER: Our community integration services strive to provide the resources and activities to assist individuals in their growth and improvement in the areas of health, education, and emotional well-being. Our trained peer support specialist gives advice and guidance, provides insight, shares information on services, and empowers the beneficiary to make healthy decisions. Group therapy will be designed to target a specific problem, such as coping with depression. Other groups may focus more generally on issues, including improving social skills or helping you deal with emotions, such as anger or loneliness. This center will provide day-to-day planned group activities for adults with behavioral health and intellectual developmental disabilities. Examples of programs include:

- Symptom Management
- Stress Management
- Anger Management
- Life & Social Skills

Individualized and goal-directed programming will provide a stable foundation while increasing each individual's level of independence to live successfully in their community. Features of the center will include:



- Large group rooms
- Common Area
- Arts & crafts rooms
- Teaching kitchen
- All-inclusive gymnasium
- Indoor basketball court
- Outside gardens to promote exercise, relaxation, and meditation

Architectural rendering of building courtesy of Azar + Walsh Architects

Since the last fiscal year, River Edge has met the following project milestones:

- Purchase of property for building site
- Demolition of blighted motels to make way for construction

Construction is anticipated to begin in October of 2024 with completion by December of 2025.

TINY COTTAGES OF MACON PERMANENT SUPPORTIVE HOUSING: In Macon-Bibb County, there are approximately 250 PSH units, which have a 100% occupancy rate and 96% success rate of keeping people from re-entering homelessness. Tiny Cottages of Macon is a new, innovative PSH project for unhoused adults who also have a mental health or substance use disorder disability that consists of ten single-family “tiny cottages.” Each cottage includes 670 square feet of living space, featuring a living room, bedroom, kitchen, bathroom, hallway, closet, and dining space. River Edge’s tiny homes utilize universal design, a design approach to make environments usable, accessible, and inclusive for all people to the greatest extent possible, regardless of age, disability, or other factors. Referrals for River Edge Housing come through the Macon-Bibb Economic Opportunity Council.



Photo courtesy of Stafford Builders & Consultants, Inc. of Completed Tiny Cottages of Macon

Since the last fiscal year, River Edge has completed the construction of the Tiny Cottages of Macon community and held a successful Open House Ceremony and Tour, featuring among other speakers, the first resident to move into one of the homes. The tiny homes allow residents to remain stably housed and help them build better lives for themselves as they seek wraparound services to assist them in their recovery.

SERENITY COURTYARD OF MACON PERMANENT SUPPORTIVE HOUSING:

Serenity Courtyard of Macon will help address the need for permanent supportive housing for some of the nearly 250,000 seniors 55 and older who are estimated to have been homeless in the United States.



Serenity Courtyard of Macon construction site

walkable courtyard and promote the long-term wellness of older persons who also have a mental health or substance use disability. A robust package of behavioral health services will support their recovery journey, as well as overall physical health and social well-being.

Since the last fiscal year, River Edge began construction on the Serenity Courtyard community, which will be completed in October of 2024.

Serenity Courtyard of Macon will consist of 26 single-family, universal-design homes in the growing West Macon Bloomfield neighborhood (near the new Atrium Health Amphitheater) that will enclose a green,



Architectural rendering courtesy of Azar + Walsh Architects

INFORMATION TECHNOLOGY

Over the past year, the IT Department successfully maintained a high standard of service delivery, ensuring that all systems remained operational with over 99% uptime. The team's commitment to efficiency and rapid response allowed them to address all reported issues in less than four hours, supporting River Edge's objectives and enhancing productivity.

System Performance and Uptime

Throughout the year, River Edge's IT infrastructure demonstrated exceptional reliability and stability.



IT team member monitoring the network

Key achievements include:

- **99% System Uptime:** The Department achieved nearly zero downtime across all critical systems and services. This achievement is a testament to the robust architecture and proactive monitoring implemented by our IT team.
- **Regular Maintenance and Updates:** Routine maintenance and timely updates were conducted to prevent potential disruptions. This included software patches, hardware upgrades, and security enhancements, ensuring optimal performance and security.

Incident Management and Resolution

The IT Department successfully managed all incidents with a focus on minimizing impact and restoring services promptly:

- **Swift Issue Resolution:** All reported issues were addressed within an average time of less than **4** hours. The department's efficient incident management processes and dedicated support team played a crucial role in achieving this target.
- **Ticket Closure:** The IT Department closed over 4,000 trouble tickets in the last year.

Key Initiatives and Projects

Several key initiatives were undertaken to further enhance River Edge IT capabilities and support organizational growth:

- **Infrastructure Upgrades:** Significant upgrades were made to the River Edge network and server infrastructure to support increased demand and improve performance.
- **Cybersecurity Enhancements:** Comprehensive security measures were implemented, including advanced threat detection systems and employee training programs to safeguard against potential cyber threats.
- **Cloud Integration:** IT successfully migrated several services to the cloud, providing greater flexibility, scalability, and cost-efficiency.

Future Plans

Looking ahead, the IT Department is committed to continuous improvement and innovation. The focus areas for the upcoming year include:

- **Expansion of Cloud Services:** Further integration of cloud solutions to enhance scalability and collaboration
- **AI and Automation:** Leveraging artificial intelligence and automation to improve service delivery and operational efficiency
- **Website Initiative:** Implementing a dynamic, user-friendly website that will be welcoming and informative to both visitors and team members

The IT Department's achievements over the past year reflect River Edge's dedication to excellence and ability to adapt to the evolving technological landscape. The IT Department remains committed to supporting River Edge's goals by providing reliable and efficient IT services.

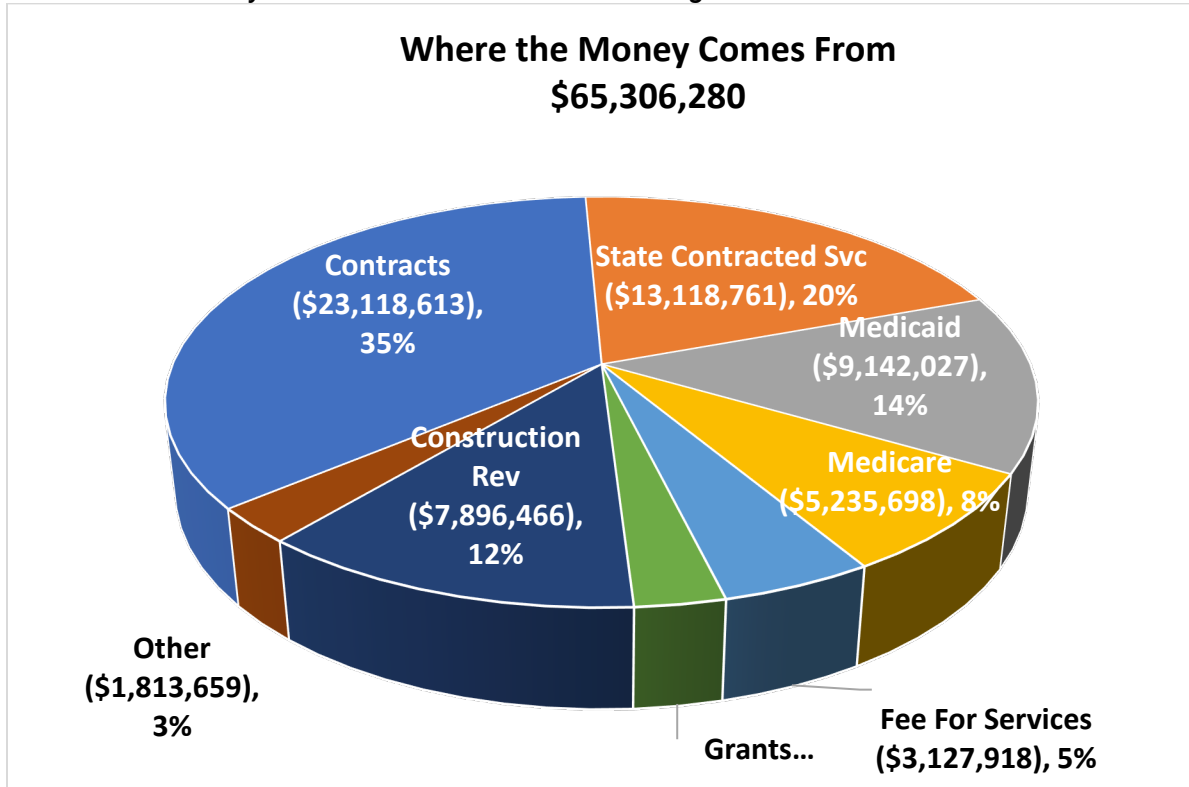
SOCIAL MEDIA

River Edge Behavioral Health and Macon Recovers' social media followers are growing:

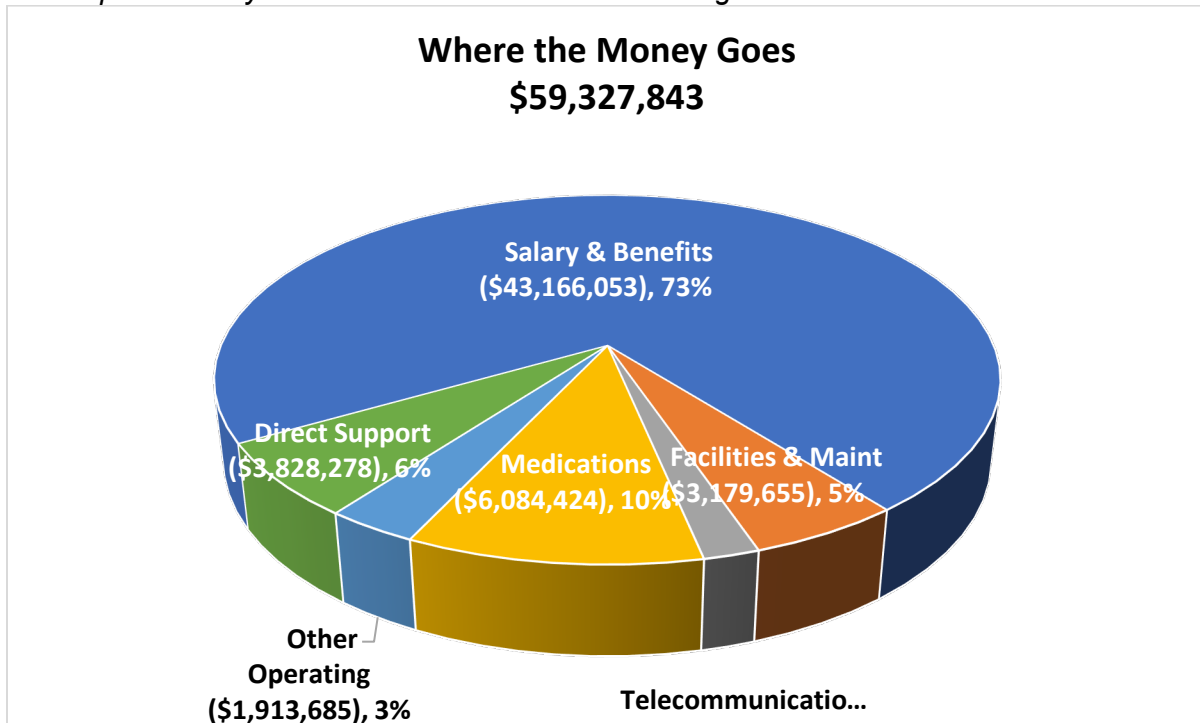
- **River Edge**
 - Facebook Page Likes: 3,100
 - Facebook Followers: 3,800
 - Instagram Followers: 770
 - LinkedIn Followers: 1,692
- **Macon Recovers**
 - Facebook Page Likes: 1,800
 - Facebook Page Followers: 2,200
 - Instagram Page Likes: 161

FINANCIAL REPORT

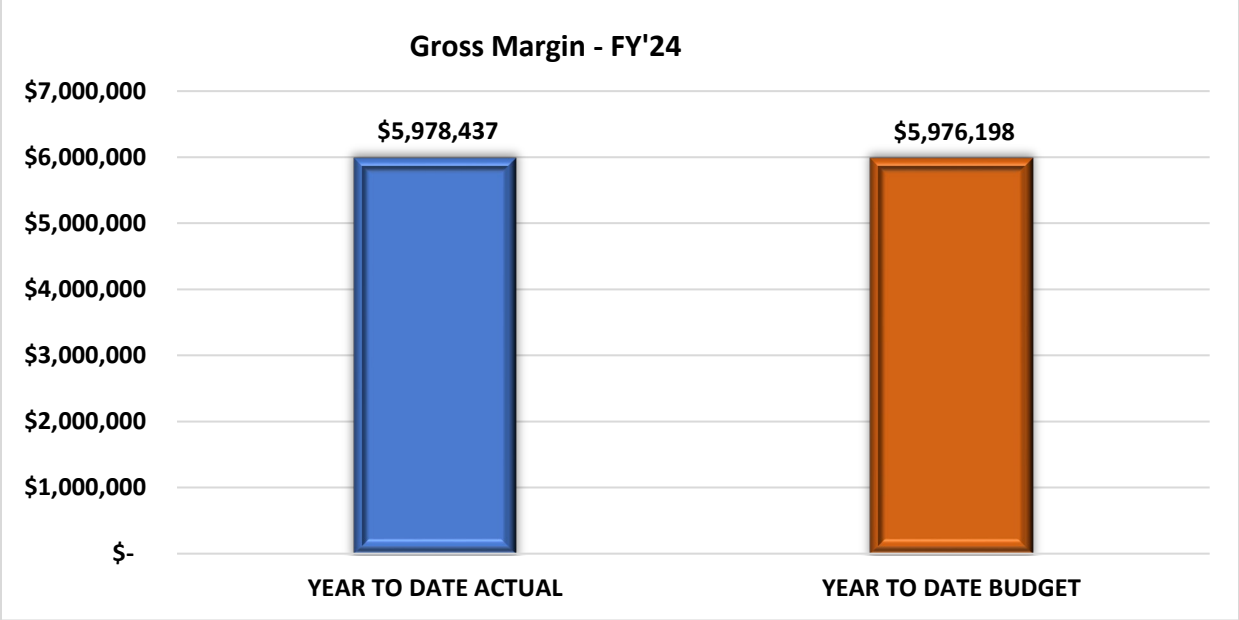
The Revenue Analysis identifies the source of funding received in FY24



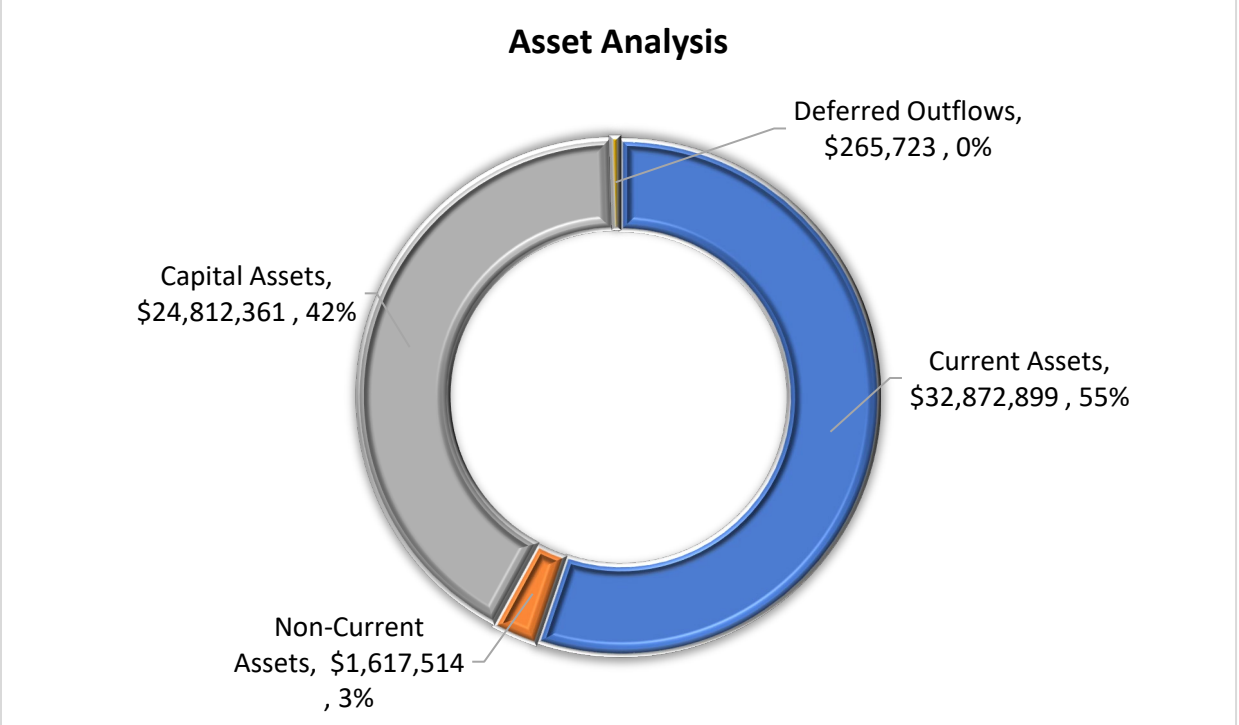
The Expense Analysis shows how and where River Edge used the Revenue in FY24



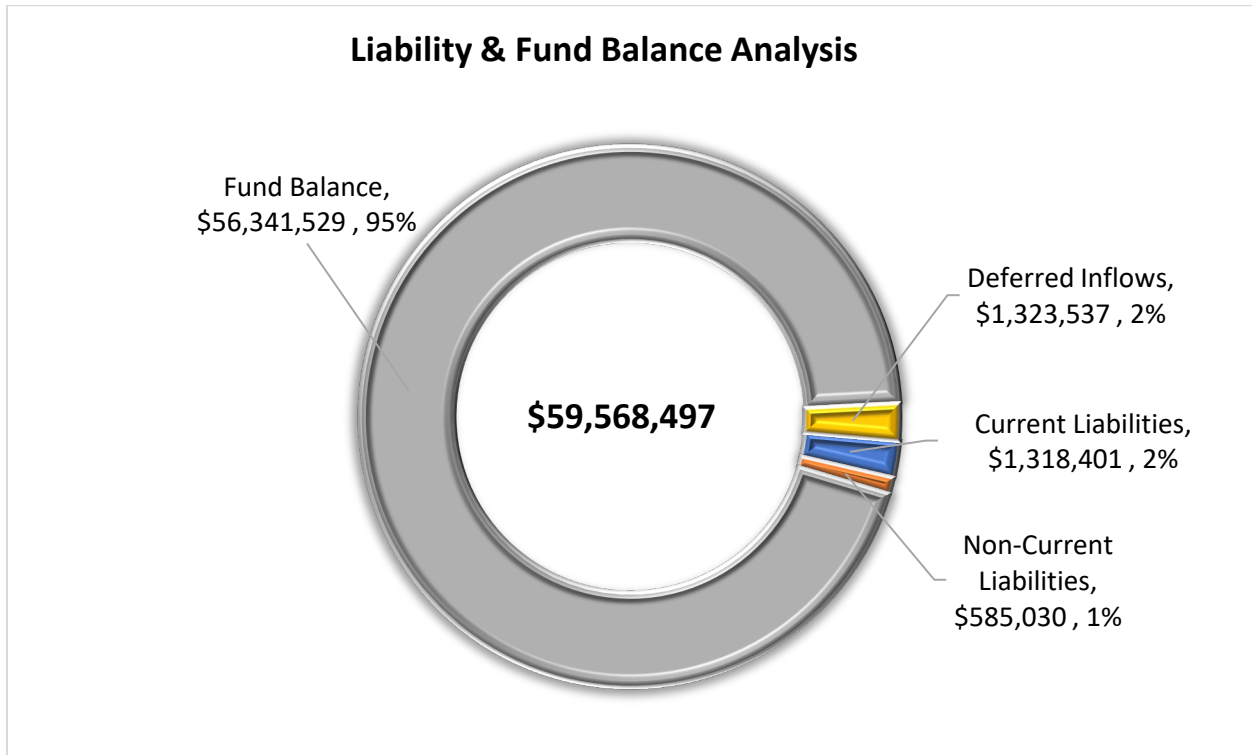
The Gross Margin for FY24 resulted in a net profit



The Asset Analysis lists the net value of selected assets for FY24



The Liability & Fund Balance Analysis lists the net values of River Edge obligations and excess fund balances for FY24



RIVER EDGE LEADERSHIP

Cass Hatcher, CCM, EDFP
Chief Executive Officer

Wm. "Tommy" Barnes, MBA
Chief Operating Officer

Miranda Nunez, LCSW, CPRP
Chief Clinical Officer

Katherine Collins, RN-BSN
Director of Crisis Stabilization &
Recovery

Jessica Oakes
Billing Manager/ECR System
Administrator

Rozina Cooper, LPC
Director of Judiciary In-Reach

Greta O'Dell, DDP, CACTS
Director of Intellectual &
Developmental Disabilities

Michele Fulcher, RN
Director of Health Information,
Risk Management & Nursing

Bennie Paige, LPC, CPCS
Director of Baldwin County Services

Mia Geiger
Director of Development

Erika Parks, MNML
Director of Housing

Christy Hallman, CPRP
Director of Admissions

Sujatha Reddy, MD
Medical Director

Shane L. Hester, CPA
Chief Financial Officer

Robin Robinson
Director of Addiction Recovery
Services

Lesa Johnson
Director of Procurement

JoAnne Sims
Executive Assistant

Bryan N. Layman, RPh
Director of Pharmacy

David Stanley, MEd, LPC
Director of Macon-Bibb County
Outpatient Services

Frederica McClary-Myers, LPC,
CPCS, MAC, CAMS
Director of Fulton County Behavioral
Health Services

Rita Wright-King, CCP,
SHRM-SCP, SPHR
Chief Human Resources Officer

Kelly McWilliams
Director of Communications &
Marketing

Ali Yallah, PhD, PMP, Six Sigma
Chief Information Officer

RIVER EDGE LOCATIONS

If you are in crisis, please call 988 or GCAL (1-800-715-4225) – both open 24/7/365

To make an appointment at any location, call 478-803-7700

For more information, call 478-803-7600 or visit www.river-edge.org

Central Georgia Outpatient Locations

(Mental health and substance use disorder treatments and support services, intellectual and developmental disabilities supports)

River Edge: Macon-Bibb County
175 Emery Highway
Macon, Georgia 31217

(Mental health and substance use disorder treatments and support services)

River Edge: Baldwin County
60 Blandy Way
Milledgeville, Georgia 31061

(Mental health peer support services, intellectual and developmental disabilities supports)

River Edge: Monroe County
168 Old Brent Road
Forsyth, Georgia 31029

River Edge InTUNE: Houston County
(Specialty service for individuals experiencing their first symptoms of psychosis)

291 Carl Vinson Parkway Suite D
Warner Robins, Georgia 31088

River Edge Addiction Support Center
(Peer-led substance use disorder services)

Macon Recovers
595 Wimbish Road
Macon, Georgia 31210

River Edge Crisis Service Centers

(Outpatient crisis stabilization)

3575 Fulton Mill Road
Macon, Georgia 31206

60 Blandy Way
Milledgeville, Georgia 31061

River Edge Residential Treatment Locations

River Edge Recovery Center

3575 Fulton Mill Road
Macon, Georgia 31206

River Edge Billingslea Recovery
Residence for Men

(Substance use disorder treatments and supports)

1243 First Avenue
Macon, Georgia 31204

River Edge LifeSPRING

(Substance use disorder treatments and supports for mothers, pregnant woman and women primarily of childbearing age)

5113 College Crossing Drive
Macon, Georgia 31206

Fulton County Outpatient Location

The Center for Health and Rehabilitation
265 Boulevard NE
Atlanta, Georgia 30312

Intellectual and Developmental Disabilities (IDD) Locations

Macon-Bibb County
IDD Options
139 Woodfield Drive
Macon, Georgia 31210

IDD Jones County
530 Settlement Point Road Suite A
Gray, Georgia 31032

IDD Monroe County
168 Old Brent Road
Forsyth, Georgia 31029